



JEEVAN DIESELS & ELECTRICALS LTD.
75, Farah Commercial Complex, J.C. Road, Bangalore - 560002
Ph : 080- 40355600, 22233365
Fax : 080-22227415
e-mail : info@jeevandiesels.com



THE COMPANY

JEEVAN DIESELS & ELECTRICALS LTD (JDEL) , an ISO 9001 company established in 1978 is one of the largest independent generating set manufacturers in Asia. In the years since its beginning with continuous focus on product development and quality management the company has been steadily growing the reputation of producing continuous excellence in product design & manufacturing. Today JDEL has become a reliable source for world class technology oriented products in the area of Power generation together with the flexibility to provide custom built designs at short notice. We can provide different combinations of Engine, Alternator & other components to suit the customer requirements. Gensets are powered by Perkins , Cummins , Mahindra engines amongst others ,all conforming to BS 5514 and coupled to Stamford / Leroy Somer alternators. The units include off the shelf or specially constructed to be transportable , Trolley mounted canopied and soundproofed sets. The comprehensive JDEL range of standard gensets suit most applications.

THE FACILITIES

State of art manufacturing units strategically located at the PONDICHERRY (NEAR PORT OF CHENNAI) & SILVASSA (NEAR PORT OF BOMBAY) with the below mentioned modern equipments supported by more than 200 dedicated skilled labourers / professional engineers has made possible the achievement of high quality work & products , the flexibility to tailor our products to customer satisfaction.

Computerized Numeric Control (CNC) machines for steel fabrication.

Computer Aided Design (CAD software) for designing the product.

Automated chain conveyor electrostatic powder coating plant.

7 stage chemical processing before painting the fabricated units.

15 Testing points Pre-Despatch ensures trouble free product to the end user.

PRODUCTS

Diesel generating set with Perkins/ Cummins / Mahindra engines
Standard control panel
Automatic Mains On Failure (AMF) control panel.
Auto- Synchronizing panel (Paralleling operation).
Automatic Transfer Switch (ATS) panel.
LV & MV switch gear panels (Custom Built)

TESTING FACILITIES

JDEL follows extensive testing procedure which is amongst the most up to date in Asia with 15 test points prior to dispatch of the equipment ensuring trouble free product to the end user. The raw materials undergo stringent quality assurance test before taken for assembly and also throughout the process of Assembling of components, Testing , Painting , Packing & Pre- Despatch Inspection (PDI). The state of art testing includes water load bank to test upto 2 MW (2500 KVA). The testing panel comprises of Digital meters of accuracy ± 0.5 , 3200 amps ACB . A computer with software and a transducer is connected to record all the parameters during the test cycle to measure Line Voltage, Line Current, Frequency, Kilowatt , Power factor etc. Each equipment is tested for performance by applying the loads at 50 % , 75 % , 100 % & 110% load . High precision instruments are used to measure the Noise levels, Vibration test, Temperature rise, Specific Fuel Consumption , Meggar test, Insulation test etc. To ensure the quality of the measuring instruments they are being calibrated periodically from reputed laboratories.

PAINTING

A low temperature stoving oven, electrostatic powder coating is used for control panels & acoustic enclosures and a hot spray system is used for the Engines/Alternators sets. Both processes provide a hard , durable and a very attractive oil proof finish.

ACHIEVEMENTS

The company achieved ISO 9001 : 2000 certification in year 2006

HIGH FLYER AWARD from KIRLOSKAR OIL ENGINES

No: 1 SELLER for ASHOK LEYLAND ENGINES

No: 1 SELLER for CATERPILLAR ENGINES GENSETS

GLOBAL OEM for PERKINS Engines

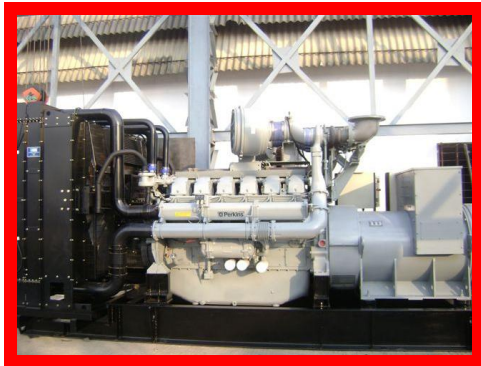
PRODUCTS AT A GLANCE



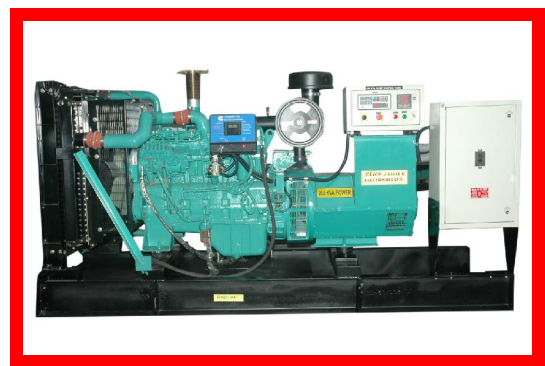
15 kva SILENT Genset



30 kva SILENT Genset



**1000 kva OPEN type Genset Powered
by Perkins 4008 TAG2 A Engine**



**250 kva OPEN type Genset powered
by CUMMINS QSL 9 G3 Engine**



**2 x 1500 kva containerized silent gensets powered by
PERKINS Engines Model 4012-46 TAG 2A**